

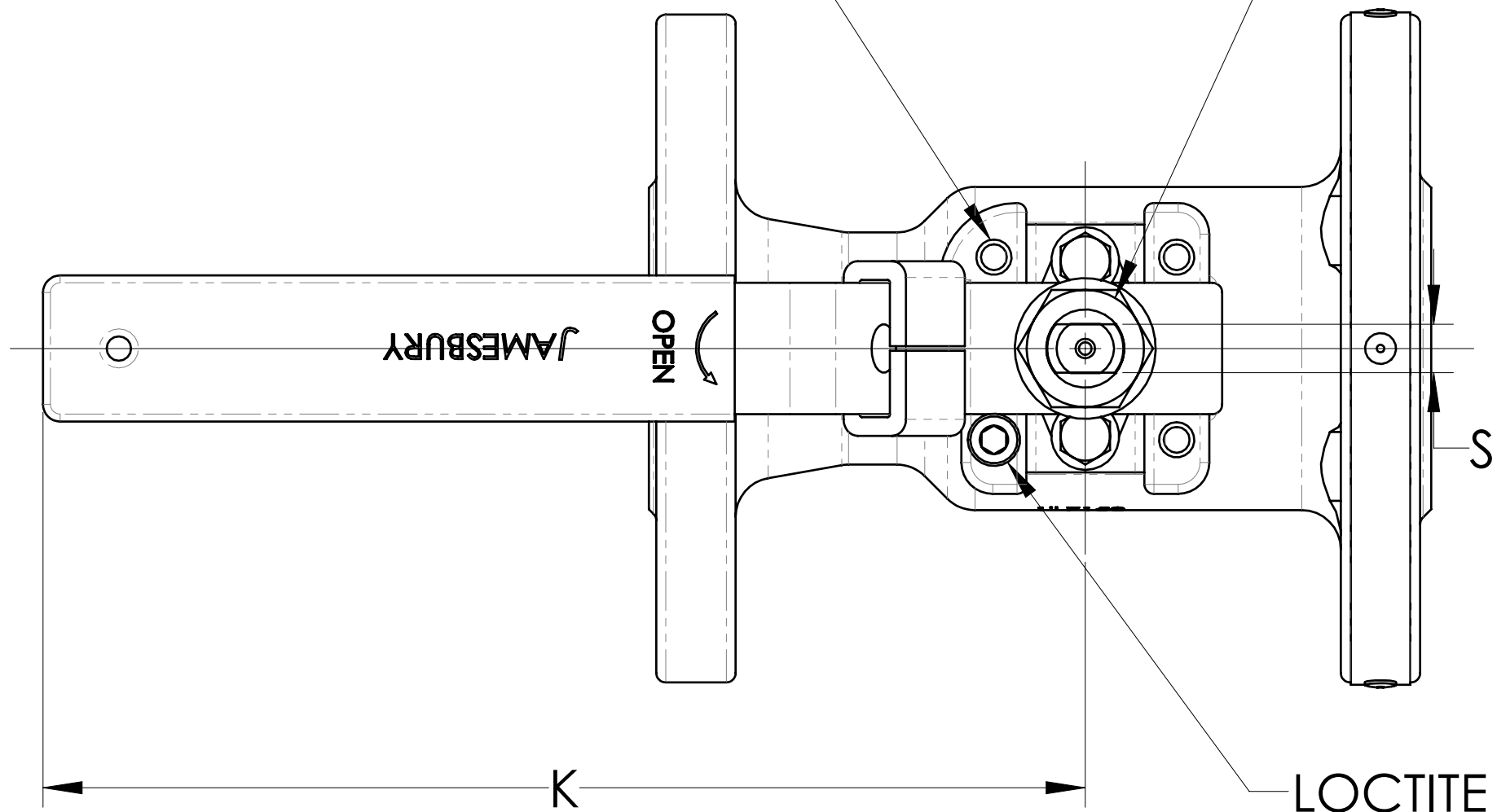
WE NELES ARE THE OWNERS OF THIS DOCUMENT AND ALL INFORMATION CONTAINED HEREIN WHICH MUST NOT, WITHOUT OUR WRITTEN PERMISSION, BE COPIED, GIVEN TO A THIRD PARTY OR IN ANY OTHER WAY USED AGAINST OUR COPYRIGHT. © 2020 NELES

NOMINAL DIMENSIONS - INCHES

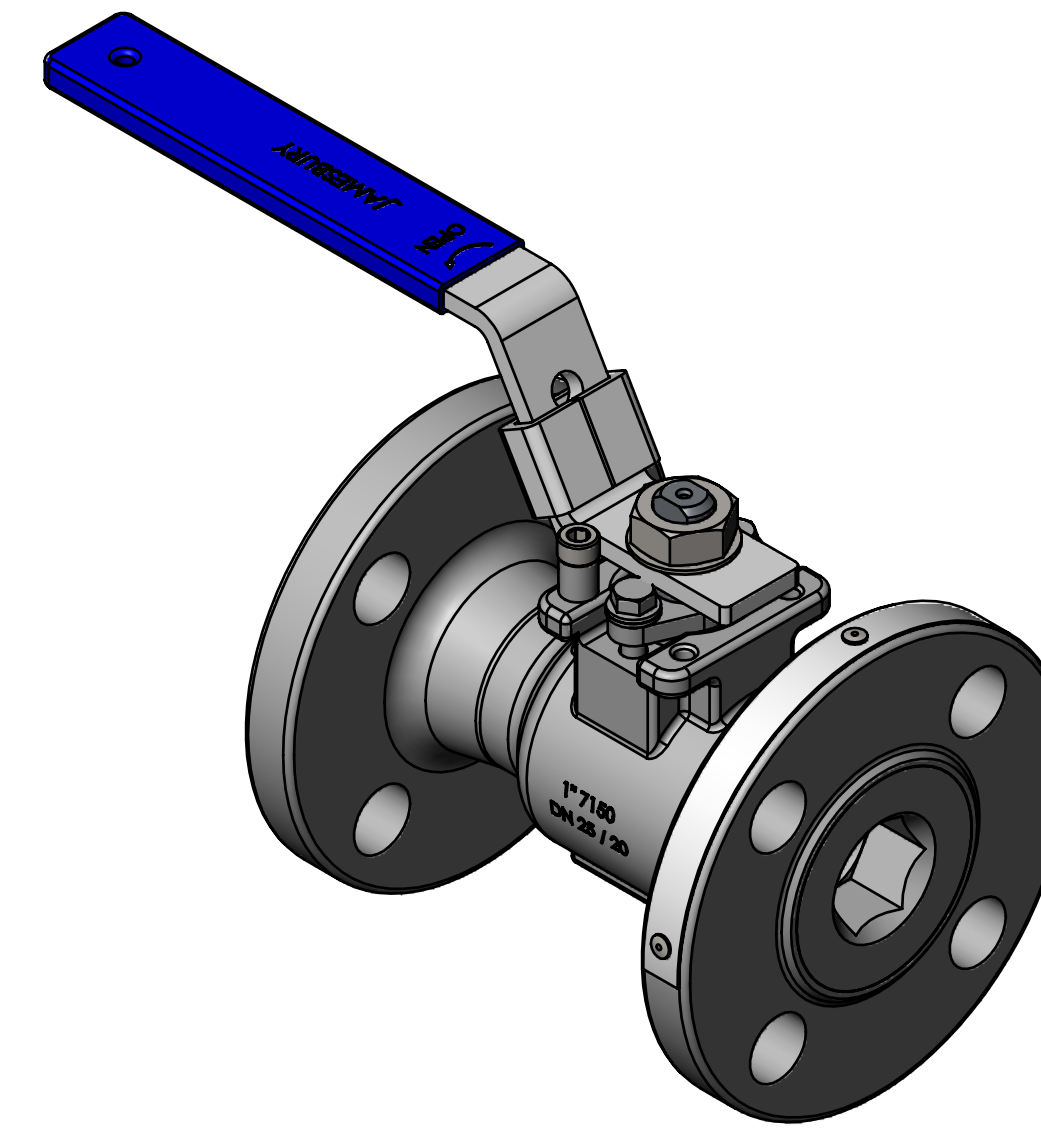
VALVE SIZE	A	B	C	D	E	F	G	H	J	K	L	M	N	P	R	S	T	HEX SIZE	ISO BONNET
1/2"	4.250	1.940	3.500	2.380	0.500	1.060	1.280	1.630	3.400	5.000	M5	1.420	0.620	4	0.310	0.180	0.500	0.500	F03
3/4"	4.630	2.000	3.880	2.750	0.690	1.220	1.430	1.790	3.550	5.000	M5	1.420	0.620	4	0.310	0.180	0.500	0.750	F03
1"	5.000	2.190	4.250	3.120	0.880	1.650	1.990	2.580	3.670	6.500	M5	1.650	0.620	4	0.500	0.310	0.560	0.880	F04
1 1/2"	6.500	2.650	5.000	3.880	1.250	2.080	2.540	3.300	4.270	8.000	M6	1.970	0.620	4	0.620	0.370	0.690	1.250	F05
2"	7.000	2.640	6.000	4.750	1.500	2.260	2.730	3.490	4.460	8.000	M6	1.970	0.750	4	0.620	0.370	0.750	1.500	F05

4 HOLES  $\phi$ L ON A  $\phi$ M BOLT CIRCLE

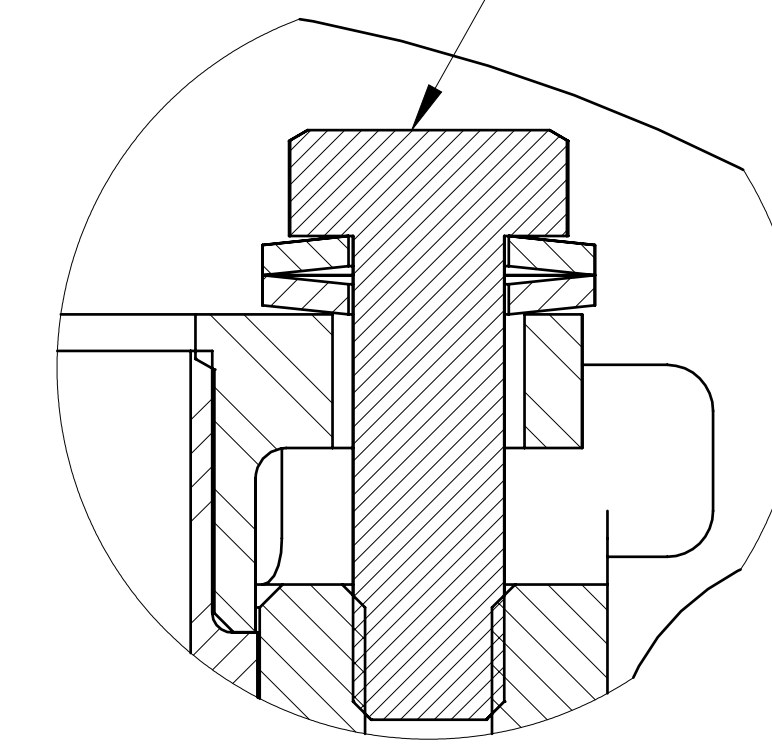
TORQUE PER TABLE 3



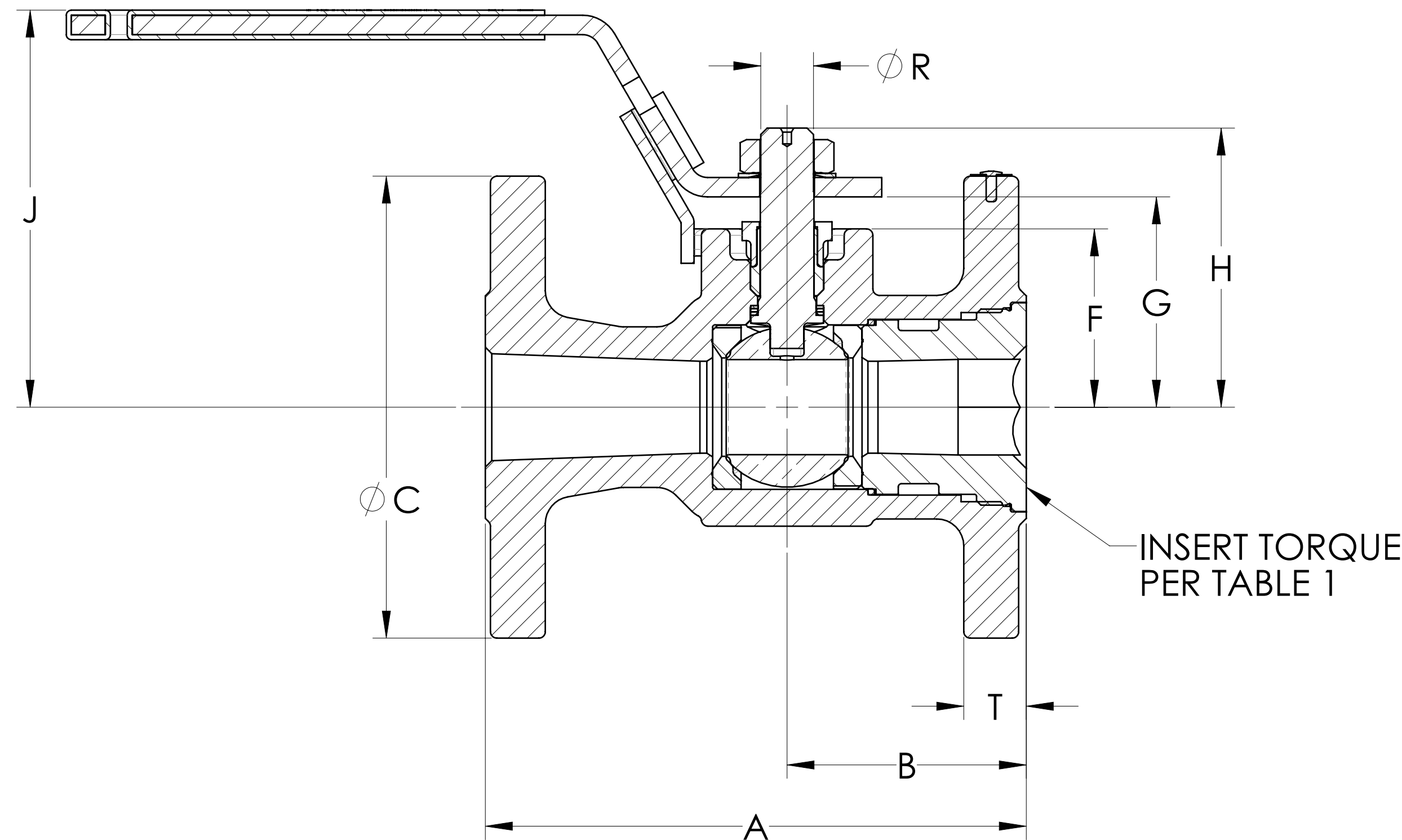
LOCTITE 222 ON SOCKET HEAD CAP SCREW THREADS PER JSA-34



TORQUE PER TABLE 2



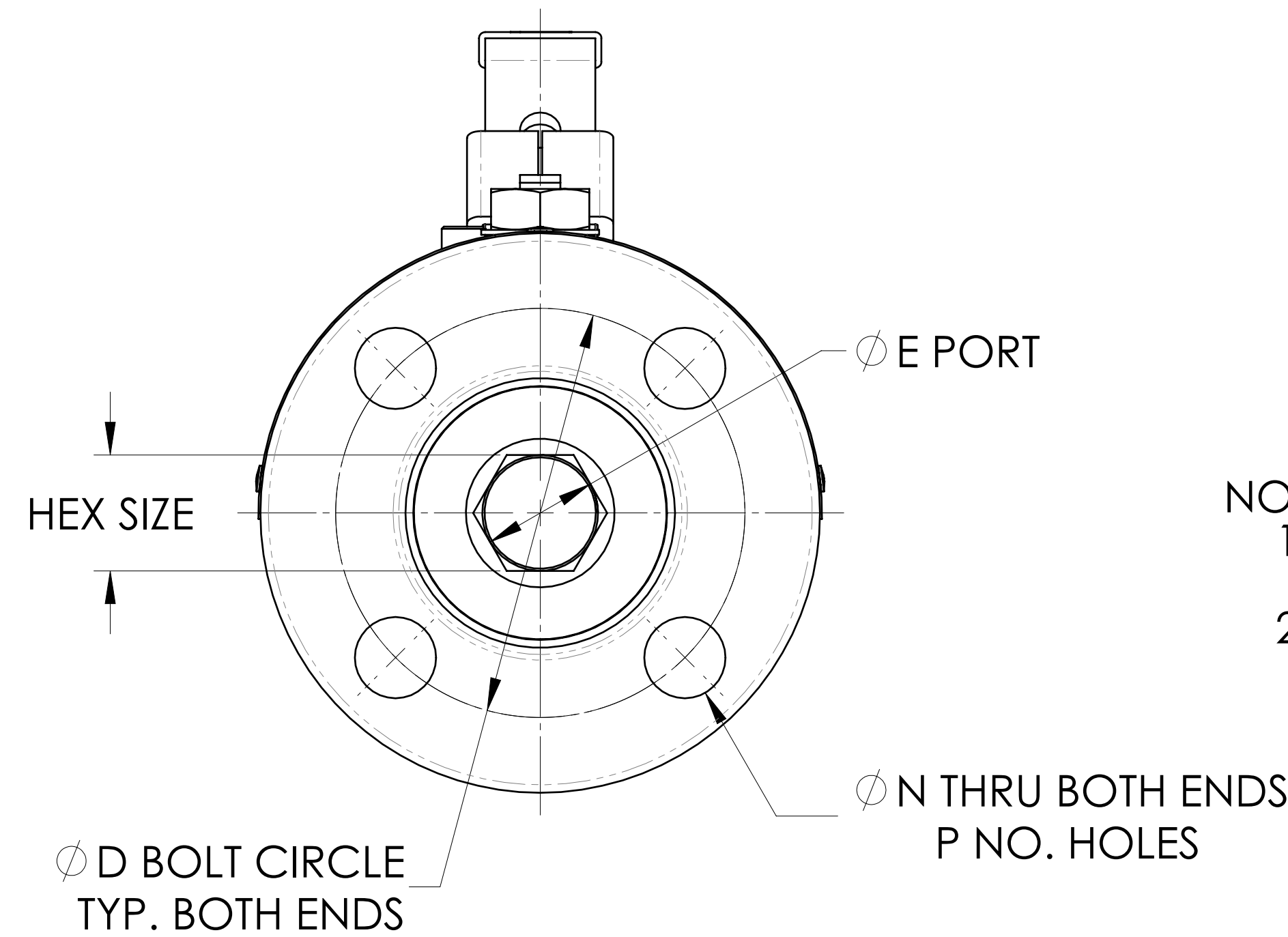
GLAND SCREW ASSEMBLY



INSERT TORQUE PER TABLE 1

HEX SIZE

$\phi$ D BOLT CIRCLE TYP. BOTH ENDS



NOTES:

1. TAG ATTACHMENT PER JS-115.
2. FOR INSTALLATION, MAINTENANCE AND OPERATING INSTRUCTIONS SEE IMO-214.

ECN NO. 46078	REVISION DESCRIPTION UPDATE DRAWING TO LATEST NELES TEMPLATE.
------------------	--

UNLESS OTHERWISE NOTED DIMENSIONS IN INCHES. DIMENSIONING, TOLERANCING, AND DRAWING INTERPRETATION IS IN ACCORDANCE WITH ASME Y14.5M. ANGLES =  $\pm 5^\circ$  FINISH =  $\sqrt{250}$  REMOVE SHARP EDGES AND CORNERS TO 0.02-0.03 RADIUS OR CHAMFER

SPECIFICATIONS TO BE USED IN CONJUNCTION WITH THIS DRAWING:  
JSA-01, JST-02, JSA-17, JSA-34, JS-115

DRAWN M. LOVEJOY	REVIEWED
APPROVED M. NEWELL	DATE 08 JAN 2021

SIZE D V1.6.04	MAKE FROM	WEIGHT	VOLUME cm <sup>3</sup>
ASSEMBLY DRAWING 1/2-2 SERIES 7150 VALVE			
SOLIDWORKS	LOCATION SHREWSBURY - USA	RESTRICTED	

DRAWN M. WINQUIST	REVIEWED	NELES	
APPROVED D. ESCOBAR	DATE 6/25/2003	REV. G	
DRAWING NO. 5442	SHEET 1 OF 2		

WE NELES ARE THE OWNERS OF THIS DOCUMENT AND ALL INFORMATION CONTAINED HEREIN WHICH MUST NOT, WITHOUT OUR WRITTEN PERMISSION, BE COPIED, GIVEN TO A THIRD PARTY OR IN ANY OTHER WAY USED AGAINST OUR COPYRIGHT. © 2020 NELES

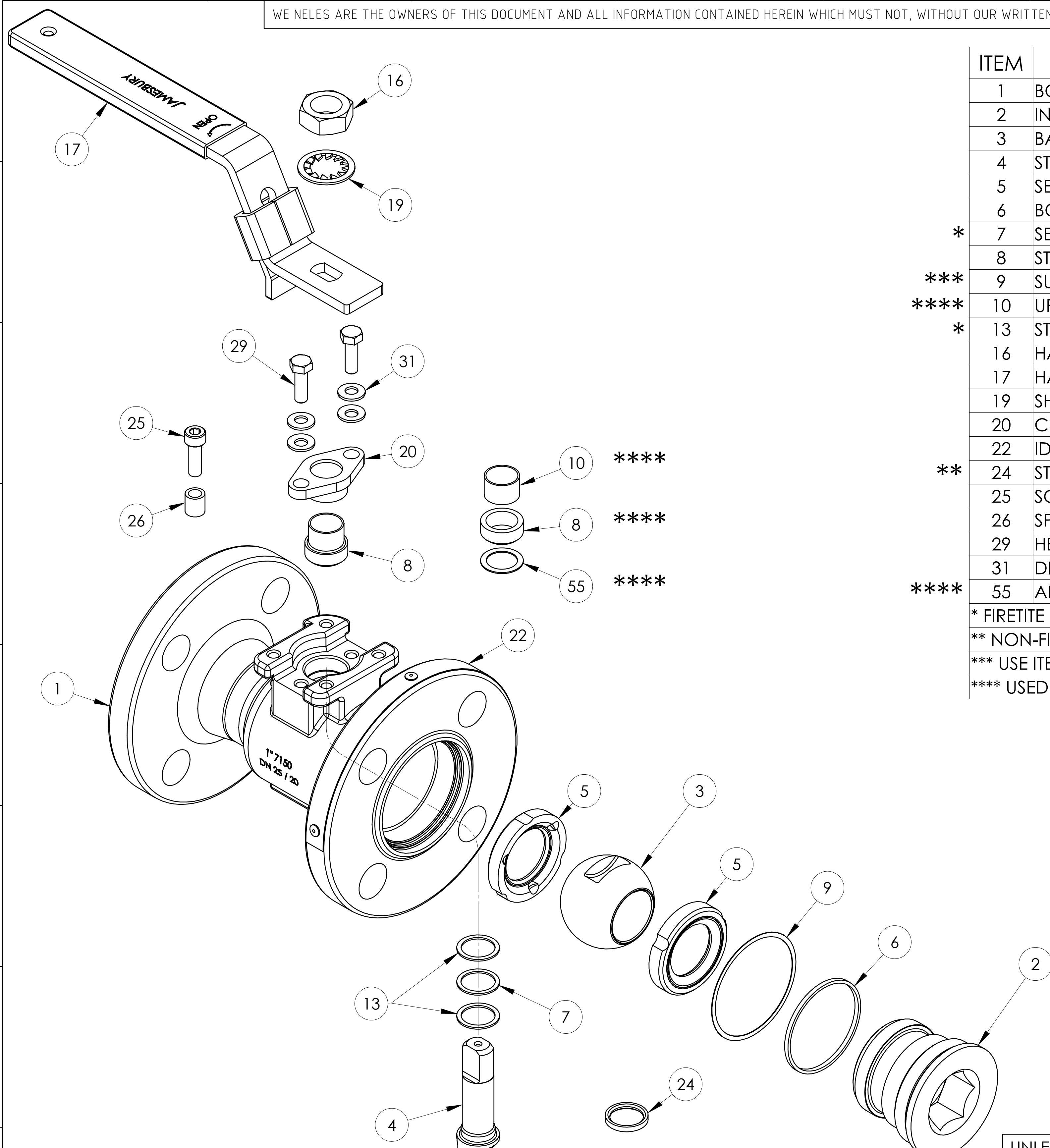
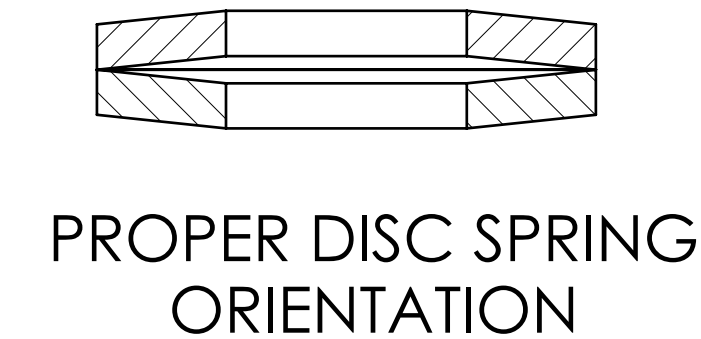
ITEM	DESCRIPTION	QTY.
1	BODY	1
2	INSERT	1
3	BALL	1
4	STEM	1
5	SEAT	2
6	BODY SEAL	1
*	7 SECONDARY STEM SEAL	1
8	STEM SEAL	1
***	9 SUPPORT RING	1
****	10 UPPER STEM BEARING	1
*	13 STEM BEARING	2
16	HANDLE NUT	1
17	HANDLE	1
19	SHAKEPROOF WASHER	1
20	COMPRESSION PLATE	1
22	IDENTIFICATION TAG	1
**	24 STEM BEARING NON-FIRETITE	1
25	SOCKET HEAD CAP SCREW	1
26	SPACER	1
29	HEX HEAD CAP SCREW	2
31	DISC SPRING	4
****	55 ANTI-EXTRUSION RING	1

\* FIRETITE VALVES ONLY  
 \*\* NON-FIRETITE VALVES ONLY  
 \*\*\* USE ITEM 9 FOR 1 1/2" AND 2" GRAPHITE BODY SEALS ONLY  
 \*\*\*\* USED FOR GRAPHITE UPPER STEM SEALS ONLY

VALVE SIZE	TORQUE LB. - FT. (±10%)
1/2"	100
3/4"	100
1"	150
1 1/2"	250
2"	350

VALVE SIZE	TORQUE LB. - IN.
1/2" & 3/4"	15
1"	20
1-1/2" & 2"	32

VALVE SIZE	TORQUE LB. - FT.
1/2" & 3/4"	7-11
1"	19-26
1-1/2" & 2"	29-36



UNLESS OTHERWISE NOTED DIMENSIONS IN INCHES. DIMENSIONING, TOLERANCING, AND DRAWING INTERPRETATION IS IN ACCORDANCE WITH ASME Y14.5M ANGLES = ±5° FINISH = 250/ REMOVE SHARP EDGES AND CORNERS TO 0.02-0.03 RADIUS OR CHAMFER	SPECIFICATIONS TO BE USED IN CONJUNCTION WITH THIS DRAWING: JSA-01, JST-02, JSA-17, JSA-34, JS-115	SIZE <b>D</b> V1.6.04	MAKE FROM	WEIGHT	VOLUME cm <sup>3</sup>	DRAWN M. WINQUIST	<b>NELES</b>
		ASSEMBLY DRAWING 1/2-2 SERIES 7150 VALVE			APPROVED D. ESCOBAR	DATE 6/25/2003	
ECN NO. 46078	REVISION DESCRIPTION UPDATE DRAWING TO LATEST NELES TEMPLATE.	DRAWN M. LOVEJOY	REVIEWED	DRAWING NO. 5442		REV. G	
		APPROVED M. NEWELL	DATE 08 JAN 2021	SOLIDWORKS	LOCATION SHREWSBURY - USA	<b>RESTRICTED</b>	SHEET 2 OF 2