



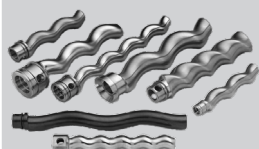
Spare Parts for Pumps

For the most common progressive cavity pump brands

We manufacture and supply a wide range of spare parts for the most common types of progressive cavity pumps. We supply stators, rotors, drive shafts, coupling rods, joint sets, bearing repair kits and seals for Allweiler, Seepex, Netzsch, Mono, PCM, Bornemann and other pumps - reliably with more than 20 years of experience.

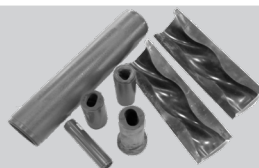
Our spare parts are manufactured according to the highest quality standards (ISO 9001:2015). We also provide predictive maintenance and service agreements and warehousing services.

Rotors



- 1/2 and 2/3 geometry
- Stainless steel
- Hard chrome plated
- Hardened
- Ceramic coated

Stators



- All materials e.g. NBR, EPDM, CSM, FPM
- 1/2 and 2/3 geometry
- Adjustable
- Splitted

Coupling rods



For all kind of coupling rod joints:

- Pin joints
- Universal joints
- K-joints
- Flexishaft

Driveshafts



- Stainless steel
- Hard chrome plated
- Black nitrated
- Ceramic coated
- Other materials

Coupling parts



- Pins
- Bushings
- Joint sleeves
- Gear joints
- Sealings
- Holding bands

CUSTOMER BENEFITS

Maintenance for valves & pumps



Specialised customer service



Fast deliveries



Wide selection of materials



High-quality spare parts



Service and warehousing agreements



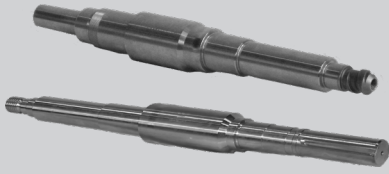
CONTACT US

Order handling
p. +358 20 787 1570
sales.service@flowrox.com

Jani Ristola,
Service Area Sales Manager
Tel. +358 50 377 0238
jani.ristola@flowrox.com

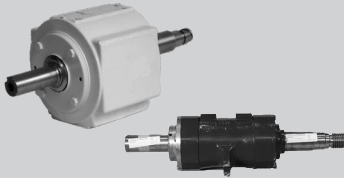


Spare parts for centrifugal pumps:



Shafts

- APP and Kest*
- Warman*



Bearing units

- APP and Kest*
- Warman*



Shaft seals

- Mechanical seals
- Sealing cords e.g. teflon and graphite

Spare parts for Flowrox pumps:



Hoses for peristaltic hose pumps

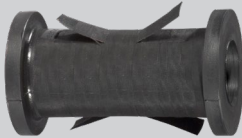
- NR, EPDM, NBR, NBRF



Spare parts and spare part kits for hose pumps

- Bearing sets
- Sealing sets

Spare parts for Flowrox valves:



Sleeves for pinch valves

- Various materials e.g. SBRT, NR, EPDM, NBR
- Also special sleeves, such as conical and suction sleeves



Sealing sets for valve cylinders

- Pneumatic and hydraulic actuators



Other spare parts

- Bushing sets
- Pinch bars, spindle, hand wheels

*APP and Kest® trademark is registered by Sulzer. Warman® trademark is registered by Weir Slurry Group Inc. All names, numbers and descriptions are used for reference purposes only and do not imply that the parts or pumps are Weir products.



Neles Finland Oy
P.O. Box 26
FI-53101 Lappeenranta
Finland
Tel. +358 104 175 000

Neles Finland Oy, Kouvola
Asentajankuja 1
FI-46810 Ummeljoki
Finland
Tel. +358 207 871 570

www.flowrox.com
info@flowrox.com

